

Cyclone[®]

Better farms start with Cyclone

SHEEP YARDS



- APPLICATION • FEATURES AND BENEFITS • SPECIFICATIONS
- SHEEP YARD CONFIGURATIONS

onesteel

www.onesteelcyclone.com.au

Cyclone[®] Sheep Yards

When you see a sheep yard, you'll find the pressure points are protected by steel.

Steel is strong enough to withstand the pressure of big mobs of sheep, and its smooth surface reduces injuries, and it requires a minimum of maintenance.

Cyclone chooses to manufacture sheep yards entirely from galvanised tubular steel. When you put up a Cyclone Tubular Steel Sheep Yard you can forget about problems like white ants, dry rot, splinters, fire, or painting. They're tough - because every part is protected by galvanising.

Cyclone Sheep Yards are hygienic, smooth and visible - reducing injuries and helping to control the spread of pests and diseases.

Every Cyclone Sheep Yard uses the same 5 standard panel sizes, reducing production costs and allowing flexibility for extensions or alterations to layout.

That's why Cyclone Sheep Yards are the natural choice for your yard.

“Rugged steel protected by galvanising”

Portable Sheep Yards

Cyclone portable sheep yards are designed to give you the flexibility of where you choose to work with your flock. The portable yard is light weight and designed for a fast and simple erection.

The Cyclone portable sheep yard comes complete with trailer which has a built in 3 way draft that forms part of the yard, and can simply be towed behind a standard vehicle. Additional panels can be purchased separately if you need to increase your yard size.

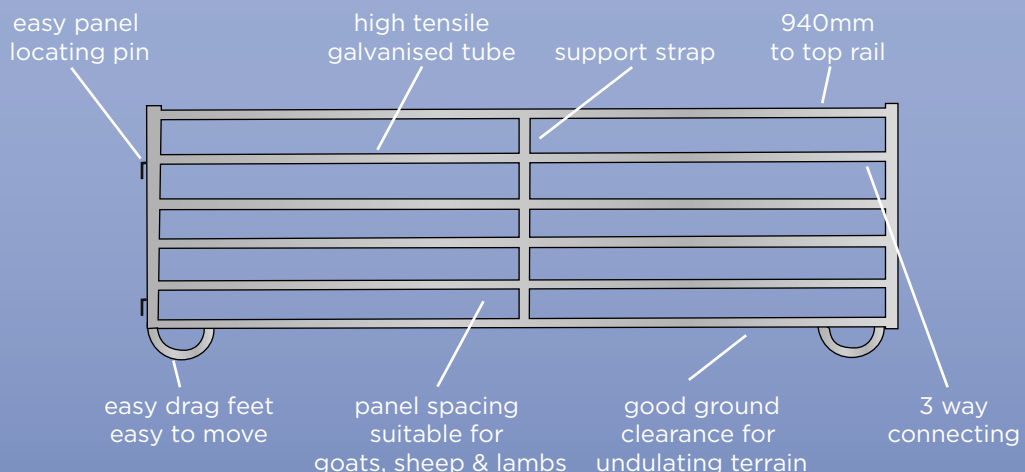
Cyclone Portable Sheep yards are packed full of features:

- Removable draw bar frame - increased safety for stock and handler.
- Safe and simple mechanical lift.
- Large draft gates offering excellent operator protection and 3 way draft facility - safe and versatile to use.
- Exceptional ground clearance 32cms and vehicle coupling height - rides level even behind a 4WD.
- 3 metre panels with “Easy drag” feet (easy to erect, easy to move) fewer panels to shift and sits securely on rough ground or uneven surfaces.
- Positive panel connection that is quick and easy -

no hassle erection of yards.

- Double hinge on block gates fold back on fence line - allowing free movement of stock.
- 2 x 1.8m sheeted panels on each unit - helps sheep feed into race by utilising ‘bugle’ design.
- Designed and built by Cyclone - offering excellent value for money.

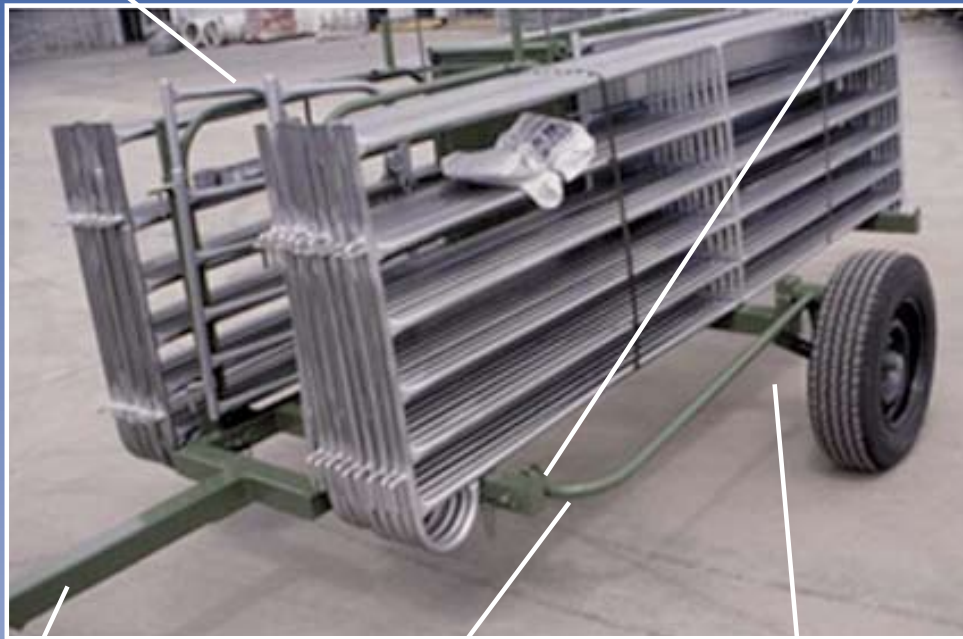
COMPONENT SPECIFICATIONS	
Trailer	<ul style="list-style-type: none"> - Race length 1.8m - Draft Gates 1.0m - Under axle clearance 32cm - Wheels SJ1.4” Retread Radials
Panels	<ul style="list-style-type: none"> - Standard - Length 3.0m - Height 940mm (to top rail) - Material 6 bars 26.9mm



Portable Sheep Yards

2 draft gates that fold back against panel.

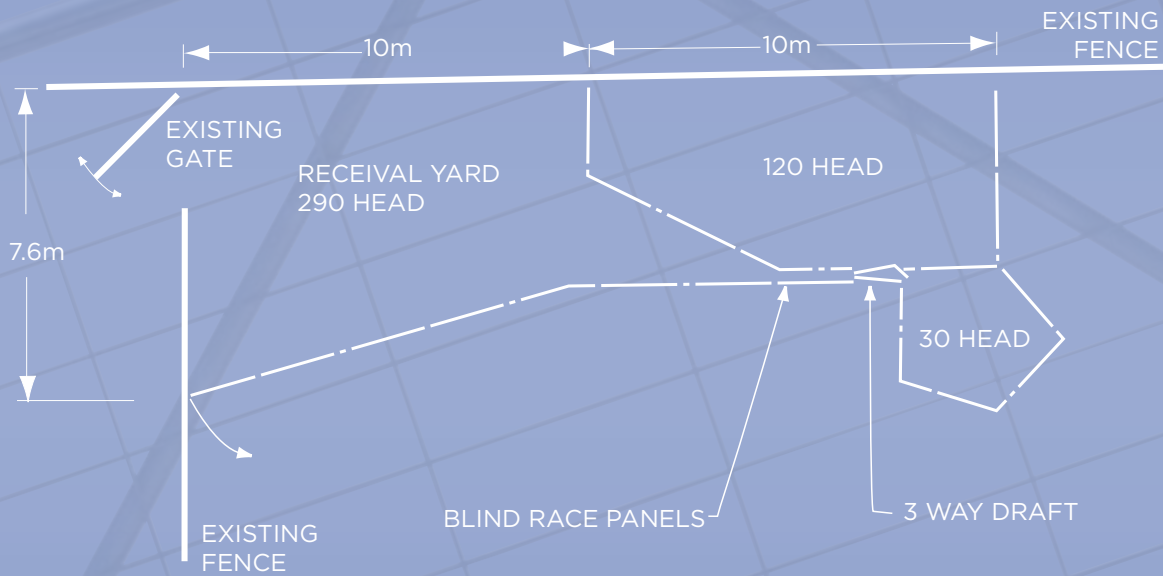
secure locking system



quick release tow bar

easy operating lowering handles

330 mm ground clearance



16 Panel Unit, 450 holding capacity, 320 working capacity

Number of panels	14	16	20	22	30
Approx. working capacity	280	320	400	410	640
Approx. holding capacity	420	450	520	540	750

Extra panels available, trailer max. capacity 30 panels

Permanent Sheep Yards

Cyclone permanent sheep yards are designed to give you the ability to manage your flock no matter what size it is, and is adaptable for you to perform all the various tasks needed to effectively manage a flock.

Cyclone permanent sheep yards have been designed with both safety and efficiency in mind. A good yard design will enable one person and a dog to effectively manage the operation with minimal effort, whilst reducing the stress on your sheep.

Cyclone manufactures a range of panels, gates and accessories to ensure your permanent sheep yard will meet your specific requirements. A large range of standard designs are available, as well as an advisor to assist you with selecting the yard that is right for you.

Manufactured entirely from galvanised tubular steel, you can forget about painting, dry rot, fire and termites. The tough 6-rail design of each panel with heavy built in centre strap gives you complete control of both sheep and lambs.

Cyclone Sheep Yard components simply clamp together with separate twin post panels required at the end of the line runs. This makes the erection of the yard simple, easy, and saves money.

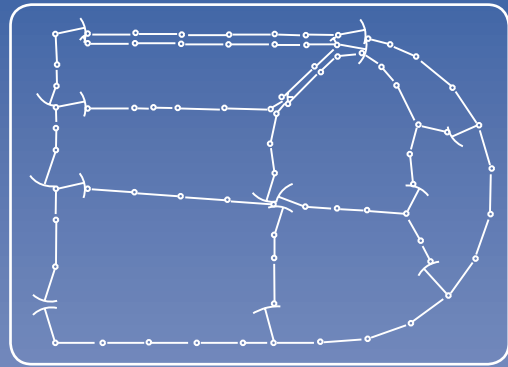
Every Cyclone Sheep Yard uses the same high standard one panel design offering you flexibility, for both extensions and/ or alterations to your layout and design when required.

A Cyclone Sheep Yard advisor can show you plans for Cyclone Sheep yards to handle from 350 to 3750 sheep - there's a size and design to suit your layout.

Bugle Design Yards

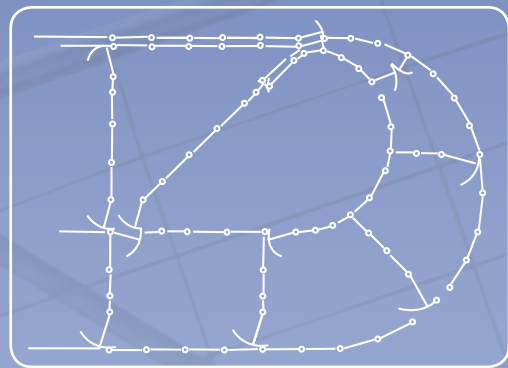
BBSY8: PRODUCT CODE

NOM. SIZE 28.0x20. HOLD CAPACITY 450, APPROX WEIGHT 1200kg



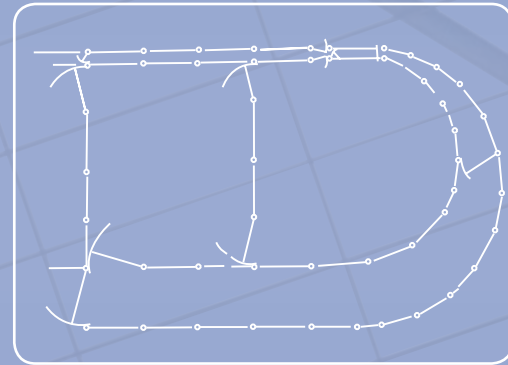
BBSY5: PRODUCT CODE

NOM. SIZE 29.0x24.6, HOLD CAPACITY 1391, APPROX WEIGHT 2250kg



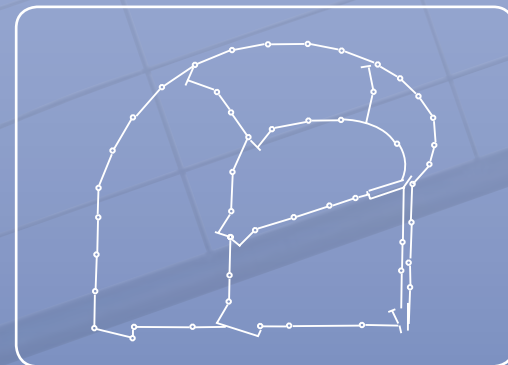
BBSY2: PRODUCT CODE

NOM. SIZE 22.4x14.1, HOLD CAPACITY 835, APPROX WEIGHT 1500kg



BBSY4: PRODUCT CODE

NOM. SIZE 24.1x22. HOLD CAPACITY 1250, APPROX WEIGHT 1750kg



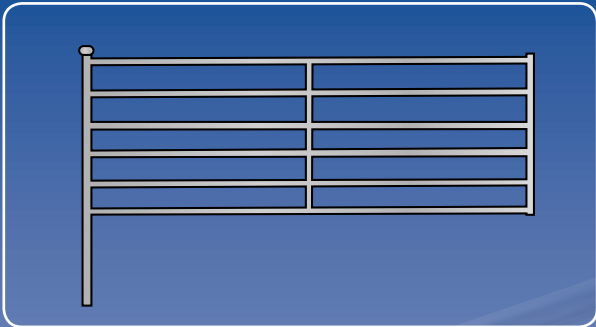
COMPONENT SPECIFICATIONS	
Panels	- 6 rail with built in centre strap.
Panel sizes	- Standard 3.0m - 2.5m - 2.0m - 1.5m - 1.25m
Gate sizes	- Standard 3.0m - 2.5m - 2.0m - 1.5m - 1.0m - 0.6m
Blind panel	- size range as per standard panel sizes sheeted with 1.0m galvanised sheet
Pipe Sizes - Galvanised	
Posts	- 50mm NB
Outer rails	- 25mm NB
Inside rails	- 20mm NB
Centre strap	- 25mm 5m flat

Permanent Sheep Yards

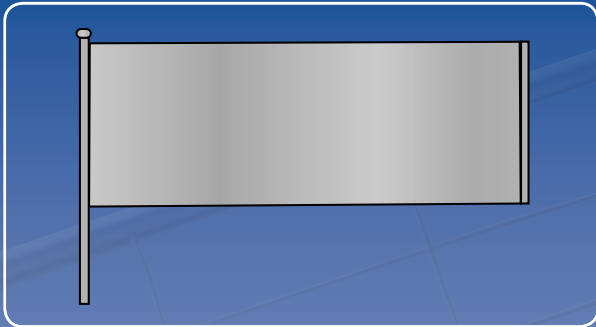
Cyclone Sheep Yards and Accessories

Visit www.onesteelcyclone.com.au or call Cyclone Sales & Service on 1800 199 450

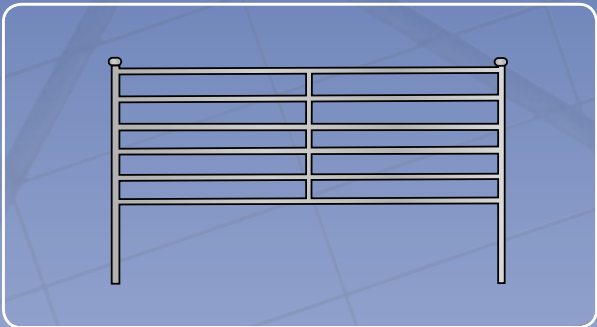
STANDARD PANEL



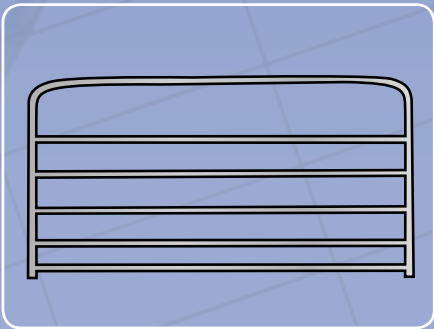
BLIND PANELS



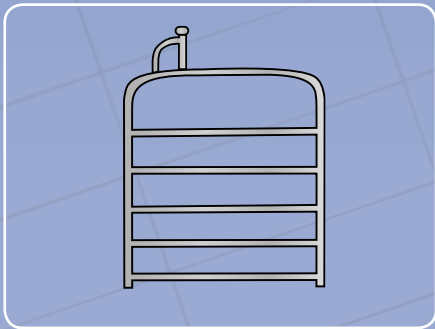
TWIN POST PANELS



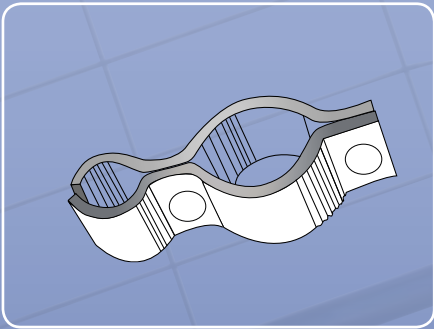
SHEEP YARD GATE



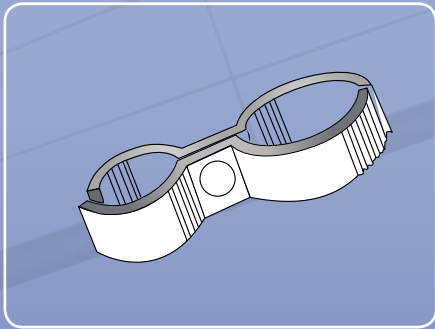
DRAFTING GATE



SHEEP YARD HINGES



SHEEP YARD CLAMPS



Cyclone Sheep Yards and Accessories

Visit www.onesteelcyclone.com.au or call Cyclone Sales & Service on 1800 199 450

